

The most variable fully automatic strapping machine

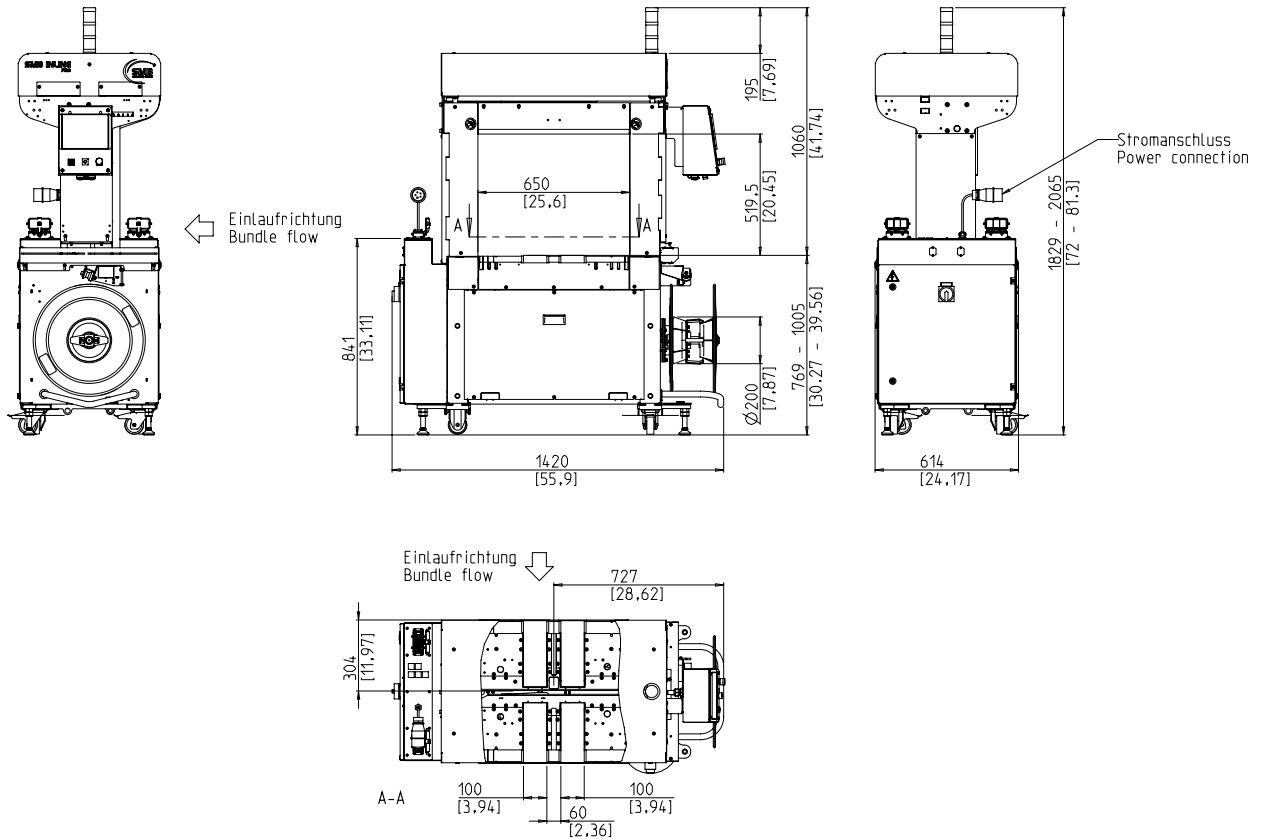


- User-friendly and intuitive
- Economical owing to highest availability
- Robust and extremely low maintenance
- Powerful
- Maximum flexibility & adaptability

EQUIPMENT:

- 5000 bundle recipes
- ASLF 'Anti-Strap-Loss-Function' Constant strap control
- Strap width 5 - 9 mm, adjustable
- Automatic strap threading, soft
- Strap end detection system with automatic discharge of remaining strap
- Automatic strap tensioning, stepless
- Strap coil detection with yellow indicator lamp
- DAT 'Direct-Access-Technology'
- The exclusive eject function avoids strap jam
- Torque controlled strap tension, adjustable
- Upstream and downstream interlocks with complete plug connection
- EPP 'Exact Product Path'
- Conveyor speed steplessly adjustable
- GreenTech energy concept, low power consumption
- MFT 'Mono-Frame-Technology'
- Bundle stops, optional
- Bundle press, optional
- Production data analysis via Ethernet/USB
- SAO 'Safe and Open' - Safe without protection doors
- SMART TOUCH 4.0 – Icon control concept
- Wear-free, energy saving direct-drive-motors
- Wear-free Strap-frame by stainless steel guide
- Many specific options available, easily configurable

SMB PRO 4.0



TECHNICAL SPECIFICATION:

CAPACITY:

Single strap, bundles/minute up to: 50
 At table belt speed in m/s: 0,8
 Based on bundle size l x w in mm: 300 x 210
 Depending on tension force

BUNDLES:

Width in mm
 Min.: 100
 Max.: 600
 Length in mm: min. 150
 Height in mm
 Min.: 5
 Max.: 400
 (see drawing)
 Weight in kg: max. 25

TRANSPORT SPEED:

m/s: 0,20 - 1,00

STRAP TENSION:

Steplessly adjustable
 Automatic strap tensioning, stepless, depending on height of bundle
 Tension at bundle in N: max. 325
 Tension path in mm: max. 200

STRAPPING MATERIAL:

Polypropylene DIN EN 13 394
 Width in mm: 5 - 9
 Thickness in mm: 0,4 - 0,65

SEALING METHOD:

Heat seal. Tensile strength of welded joint is approx. 80% of the breaking strength of the strap

STRAP COIL:

Core ID in mm: 200
 Core OD in mm: 420
 Width in mm: 190 (160,180,200)

POWER SUPPLY:

Wide Range Input 380-520V, 3AC; 47 63 Hz
 Maximum fusing 16A (B-character)
 Protection Type: IP 54

POWER CONSUMPTION:

Power consumption in kW approx.: 0,35

WEIGHT:

Total weight approx. in kg: 380

OPERATING CONDITIONS:

Temperature range in °C [°F]: +5 [41] - +45 [113]



Signode Packaging Systems GmbH

Markgrafenstraße 2 | D-95497 Goldkronach | Germany
 Tel.: +49 (0) 9273 / 982-201 | Fax.: +49 (0) 9273 / 982-100
 www.smb.biz | sales@smb.biz

